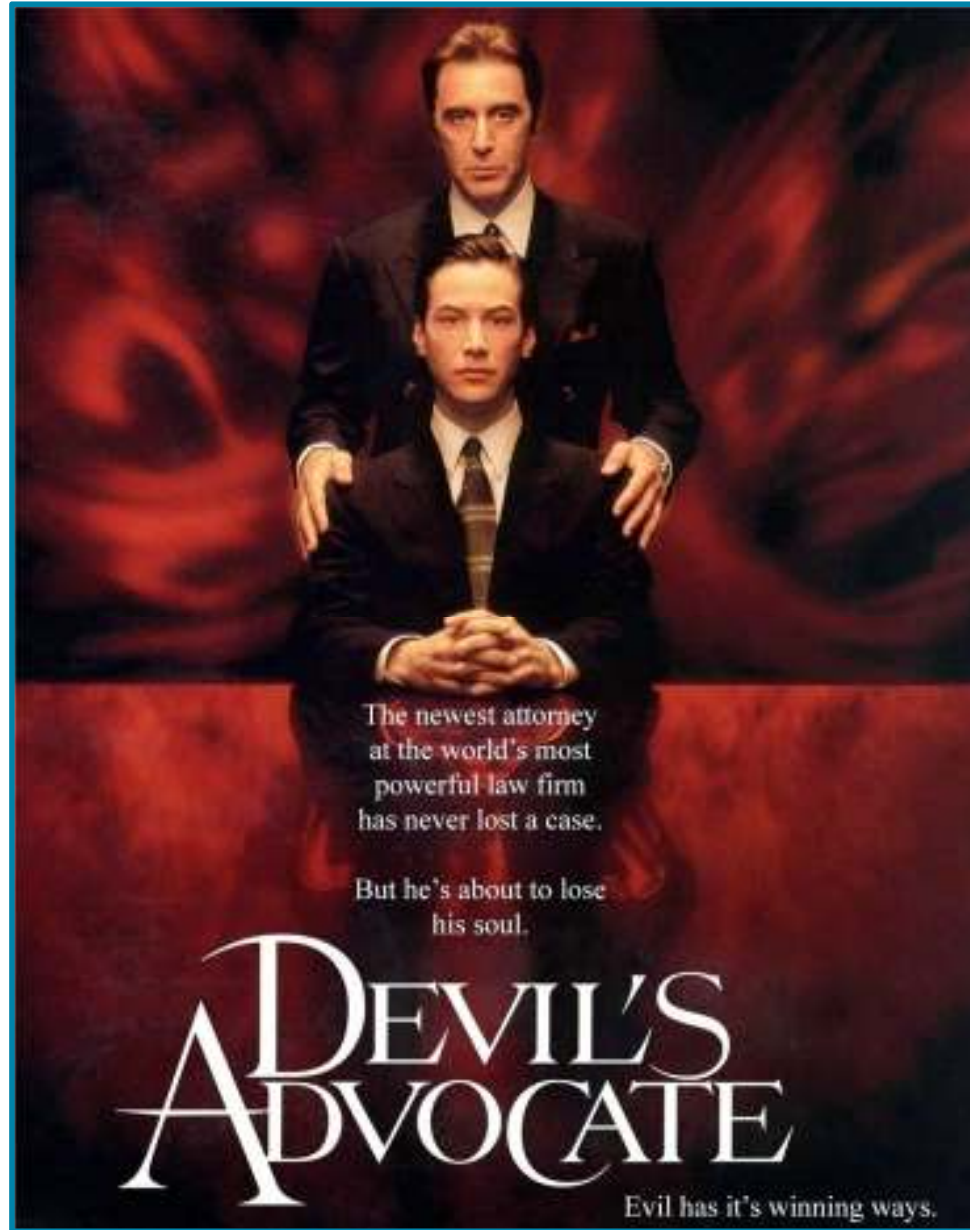


# Insurance and Supply Chain

Andrew R. Bradley  
Head Group Risk Services  
Nestlé SA  
Vevey, Switzerland





**“There are worse things in life than death.  
Have you ever spent an evening with an insurance salesman?”**

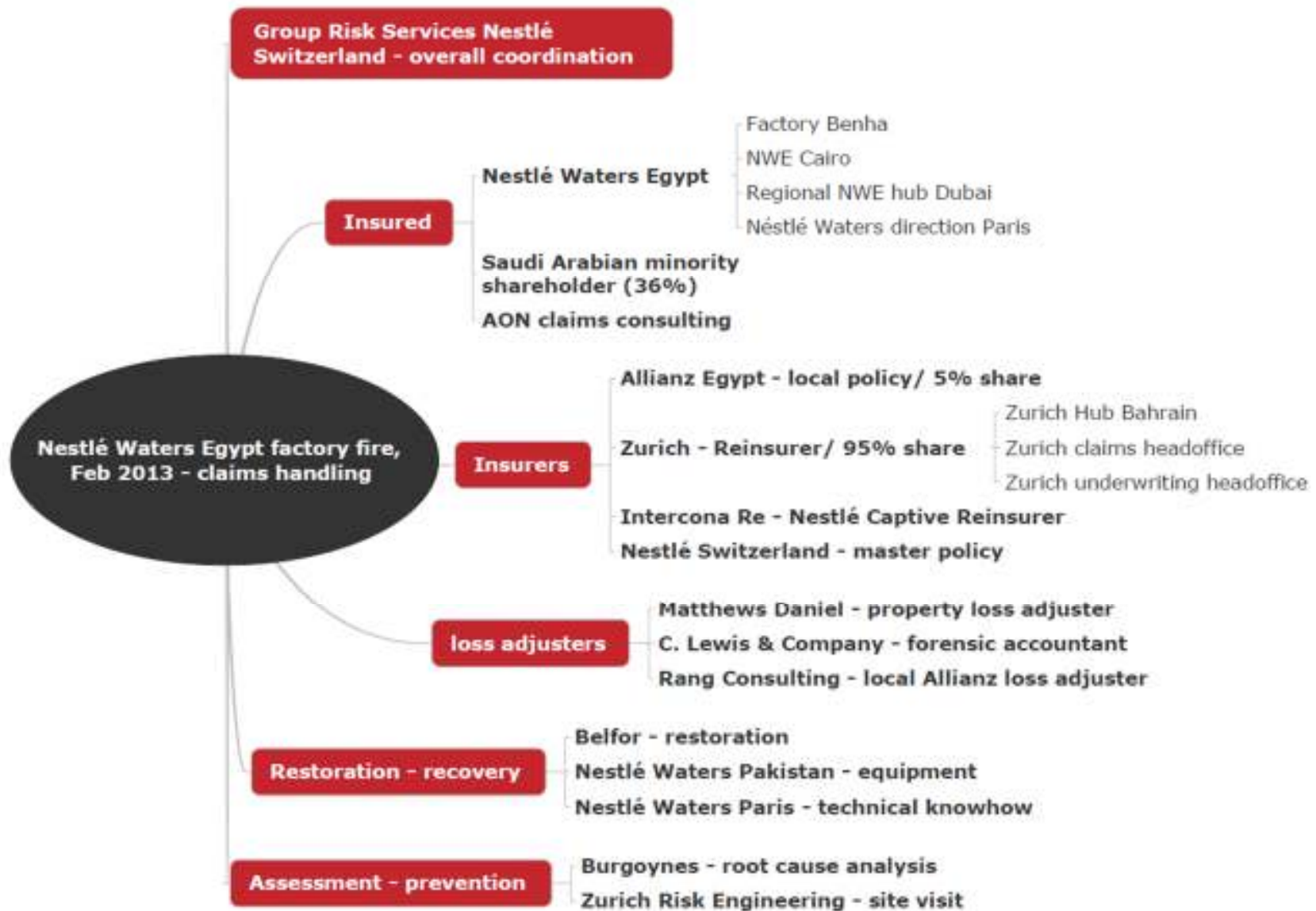
**Woody Allen**

# Insurance & Supply Chain / Insurance issues

- Define Insurance Cover – Nespresso capsules
- Compliance – Local policies
- Insurer Network
- Are clients prepared to pay ?
- Paying claims ... an example

# Fire incident in Benha (February 2013)





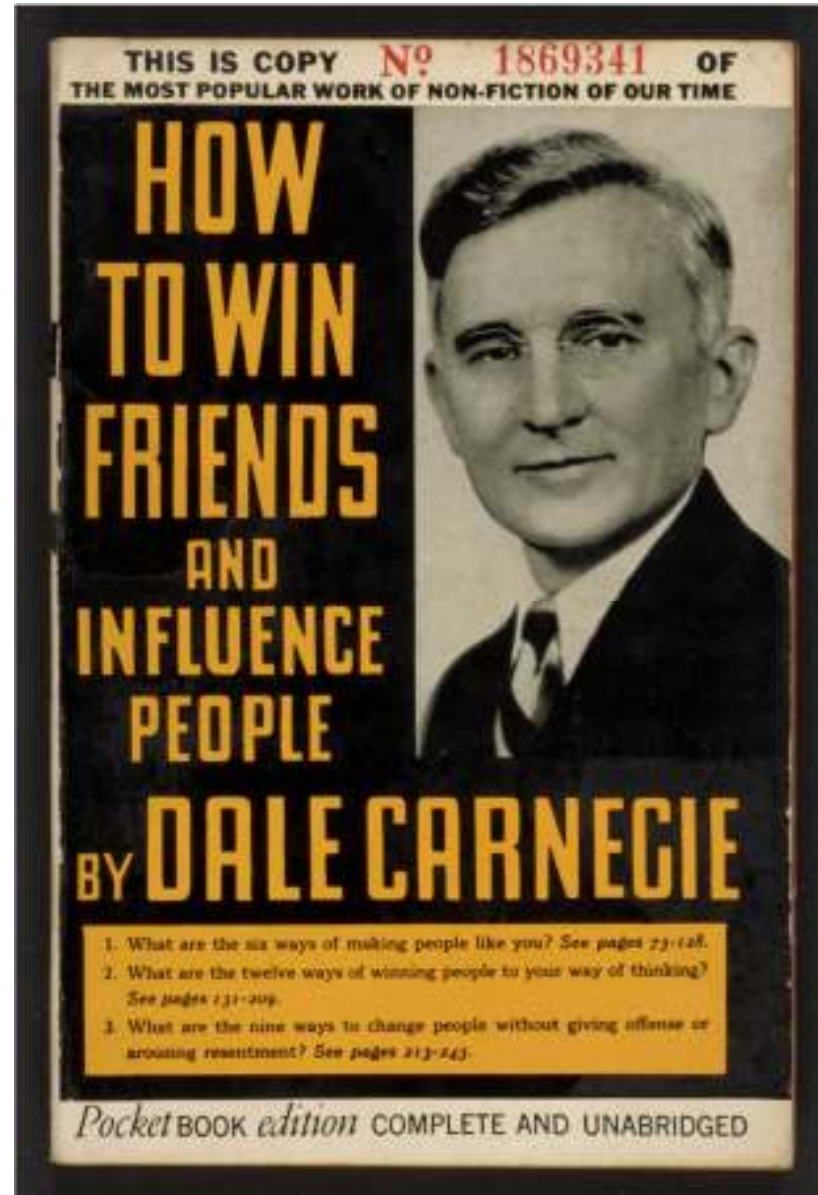
# Insurance & Supply Chain / Supply Chain issues

- Enterprise Risk Management (ERM) process should highlight issues / Ensure procurement and logistics involvement
- More investment in Emerging Markets
- Supply Chain Mapping
- Physical Loss Prevention at own locations plus Suppliers
- Push Business Continuity Management (BCM) concept back to Suppliers

# Conclusion

- ERM process should highlight issues
- Insurers' role
- Link to sustainability





# Insurers could be Superheroes ?

