



Cambridge Judge Business School

Centre for Risk Studies

NATURAL CATASTROPHE AND CLIMATE

Oliver Carpenter
Research Assistant, Cambridge Centre for Risk Studies

4 December 2018

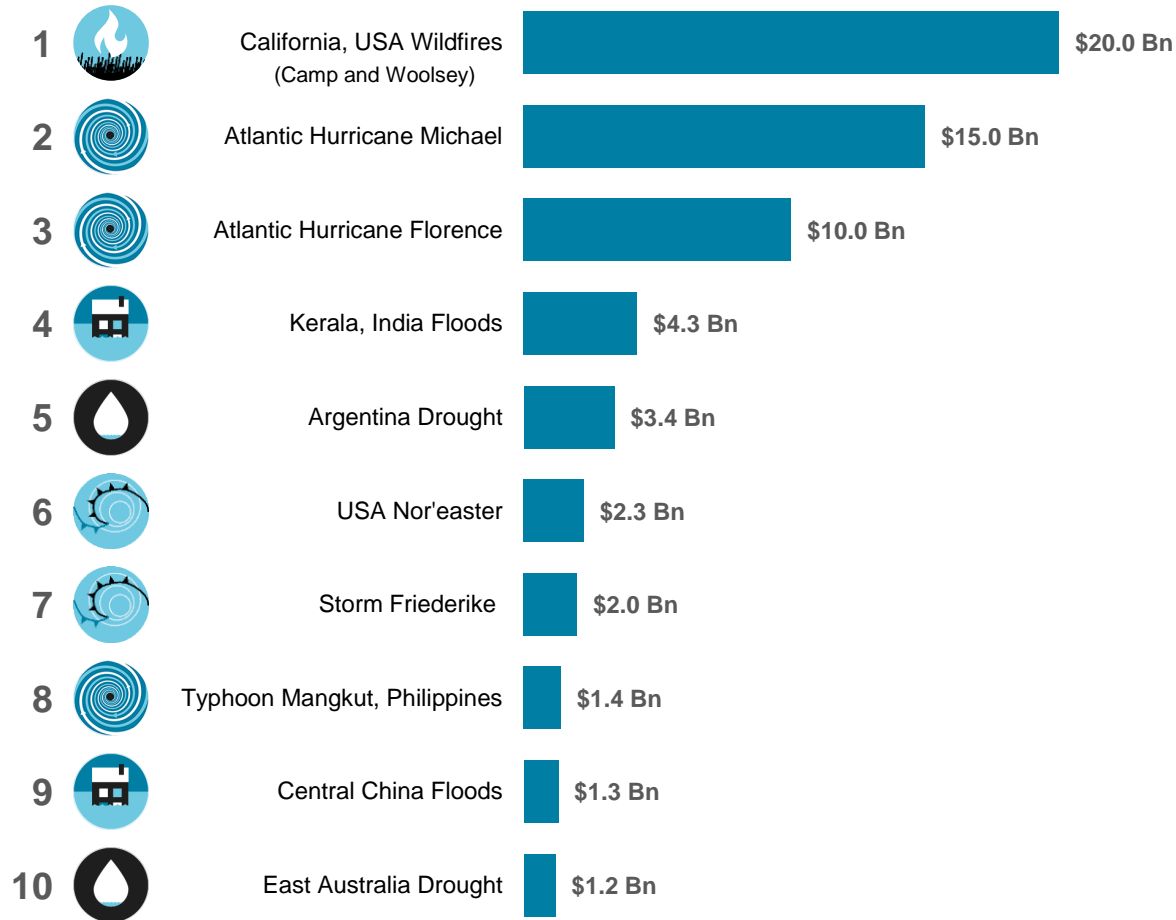
Centre for
Risk Studies



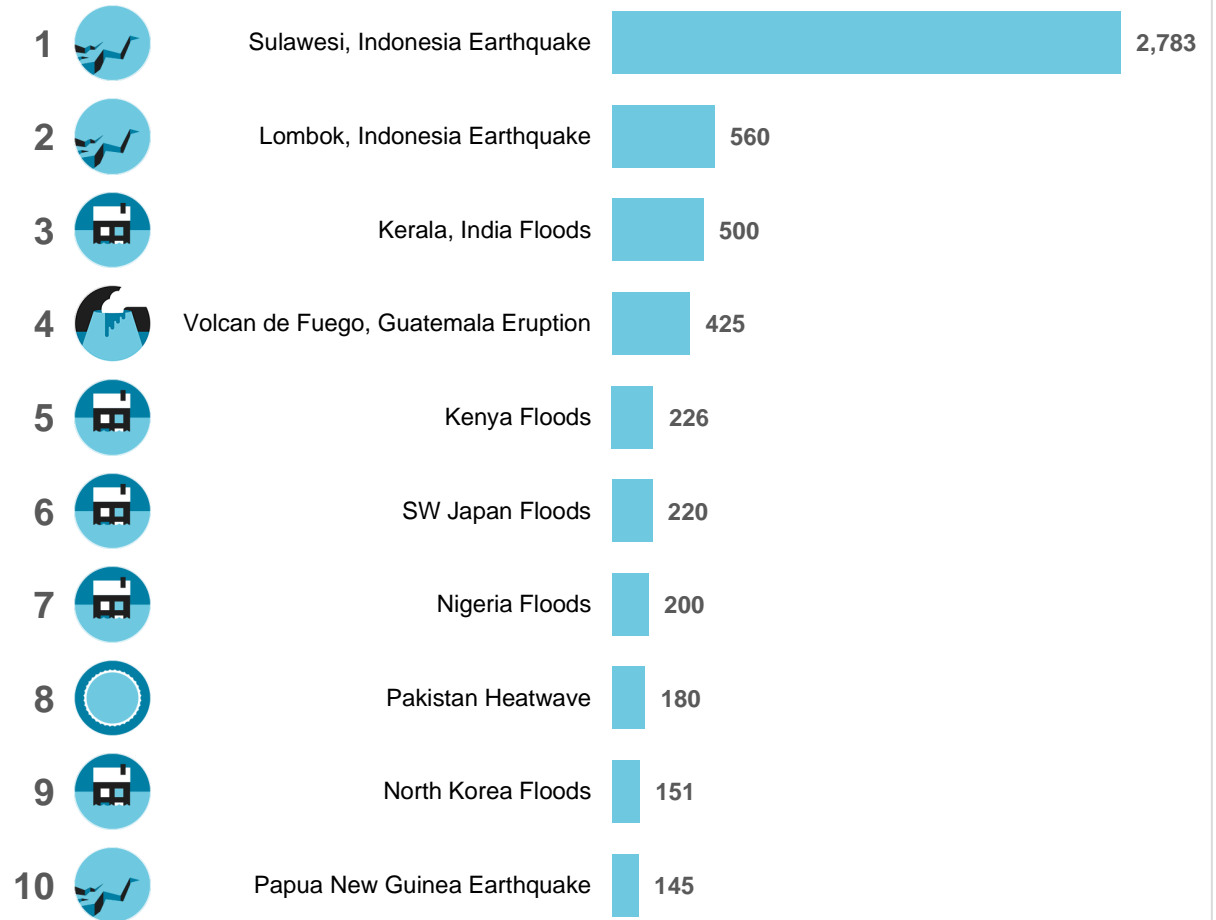
UNIVERSITY OF
CAMBRIDGE
Judge Business School

Top 10 Global Natural Catastrophes 2018

Economic Loss (preliminary estimates)



Fatalities



Data from EM-DAT (CRED, 2018)

Geophysical Hazards



Earthquake

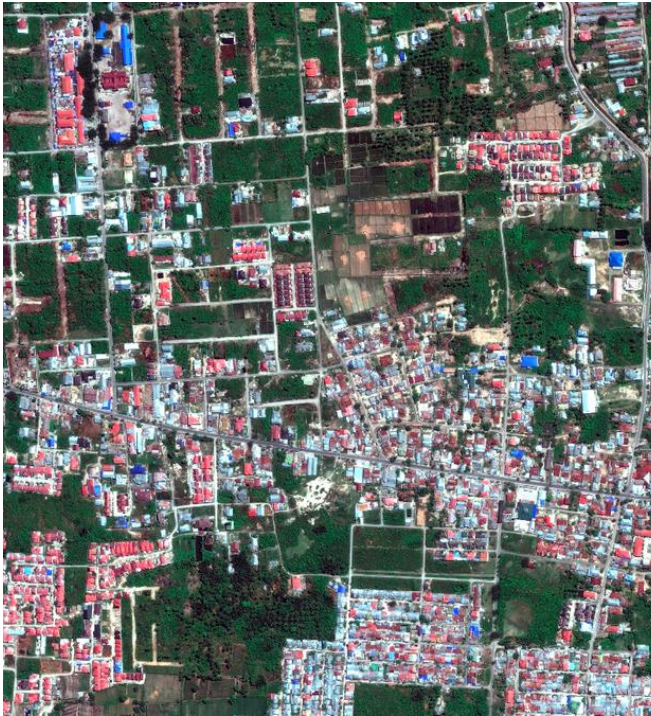


Tsunami



Volcanic
eruption

Liquefaction during the Sulawesi Earthquake, Indonesia
28th September 2018



Before (17/08/2018)



After (01/10/2018)

Landslides caused by the Hokkaido Earthquake, Japan
6th September 2018



Hydrometeorological Hazards



Tropical Windstorm

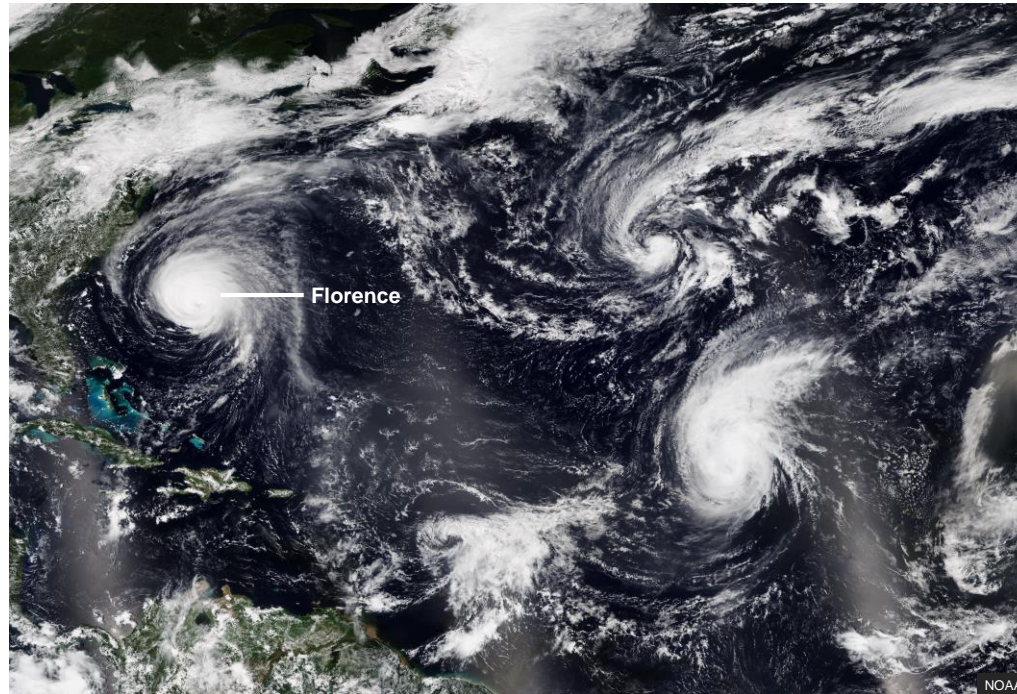


Temperate Windstorm



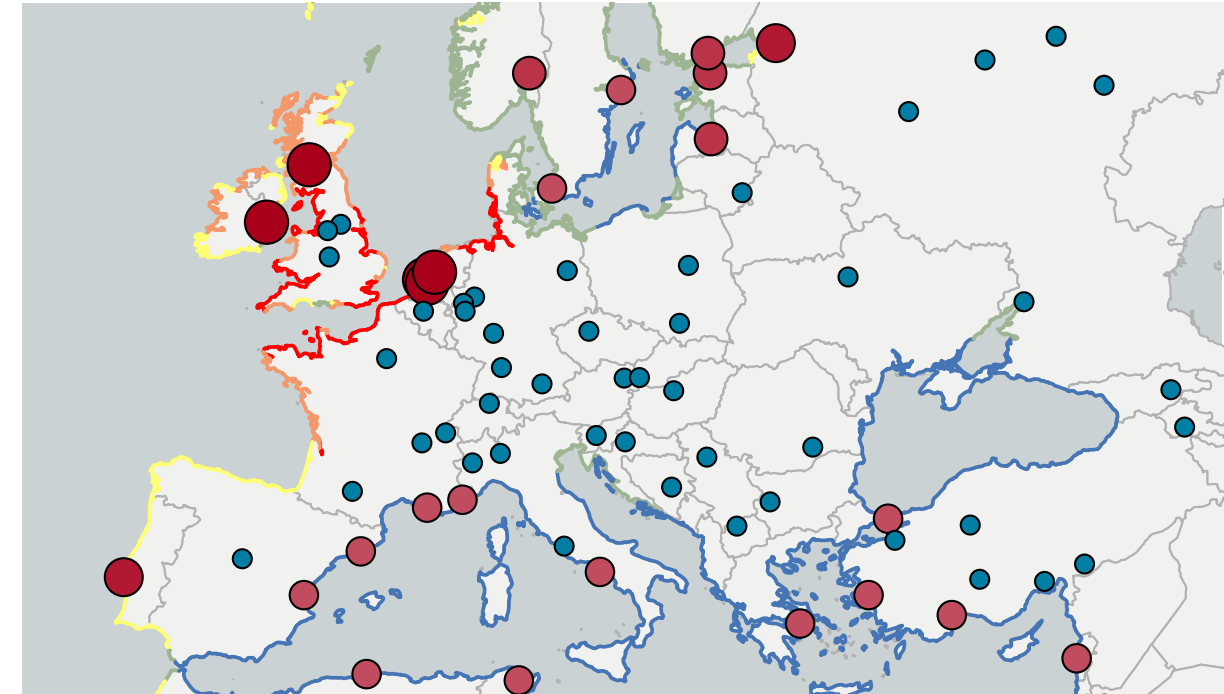
Flood

Four simultaneous names storms in the Atlantic



In September, there were 21 named tropical cyclones active at some point during the month – just one short of the record 22

Coastal Flood Model Update: Storm Surge Hazard in European Cities



GSRP Return Period

0 1 2 3 4+

CR2019 City Water Level

0-1 1-2 2-3 3-4 4+

Hydrometeorological Hazards

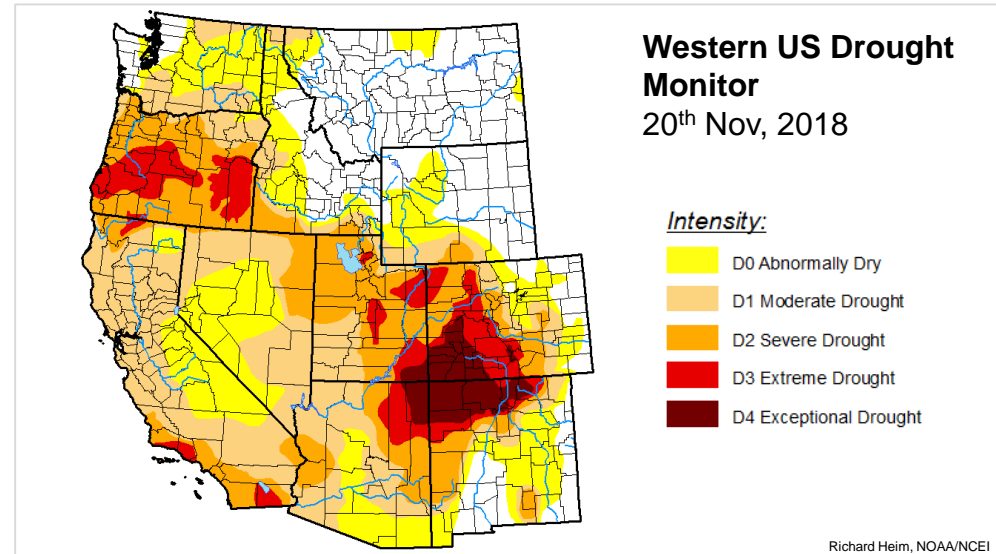
Snowfall in Rome during European Cold Wave in February



California's Camp Fire burned 150,000 acres, destroying over 14,000 structures and killing 85



The Beast from the East engulfs London



Freeze

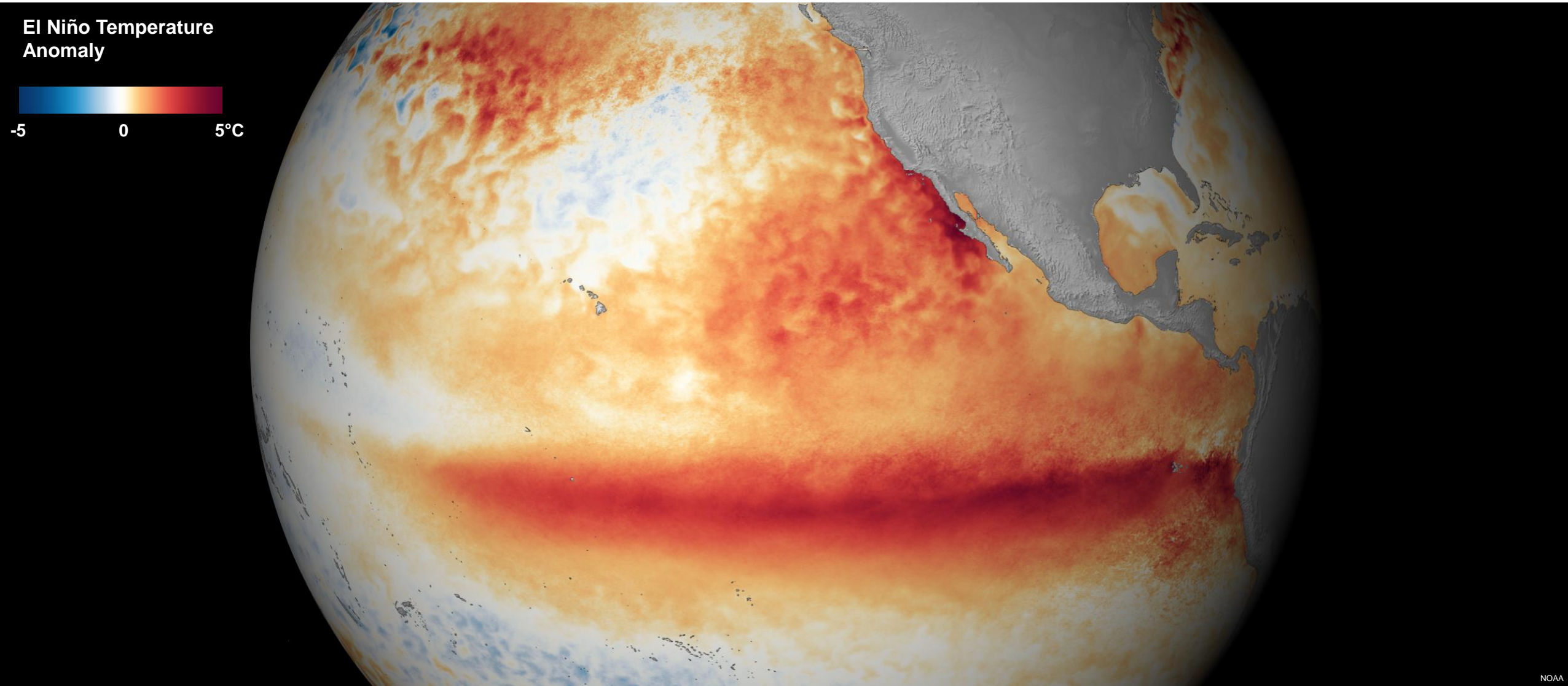


Heatwave



Drought

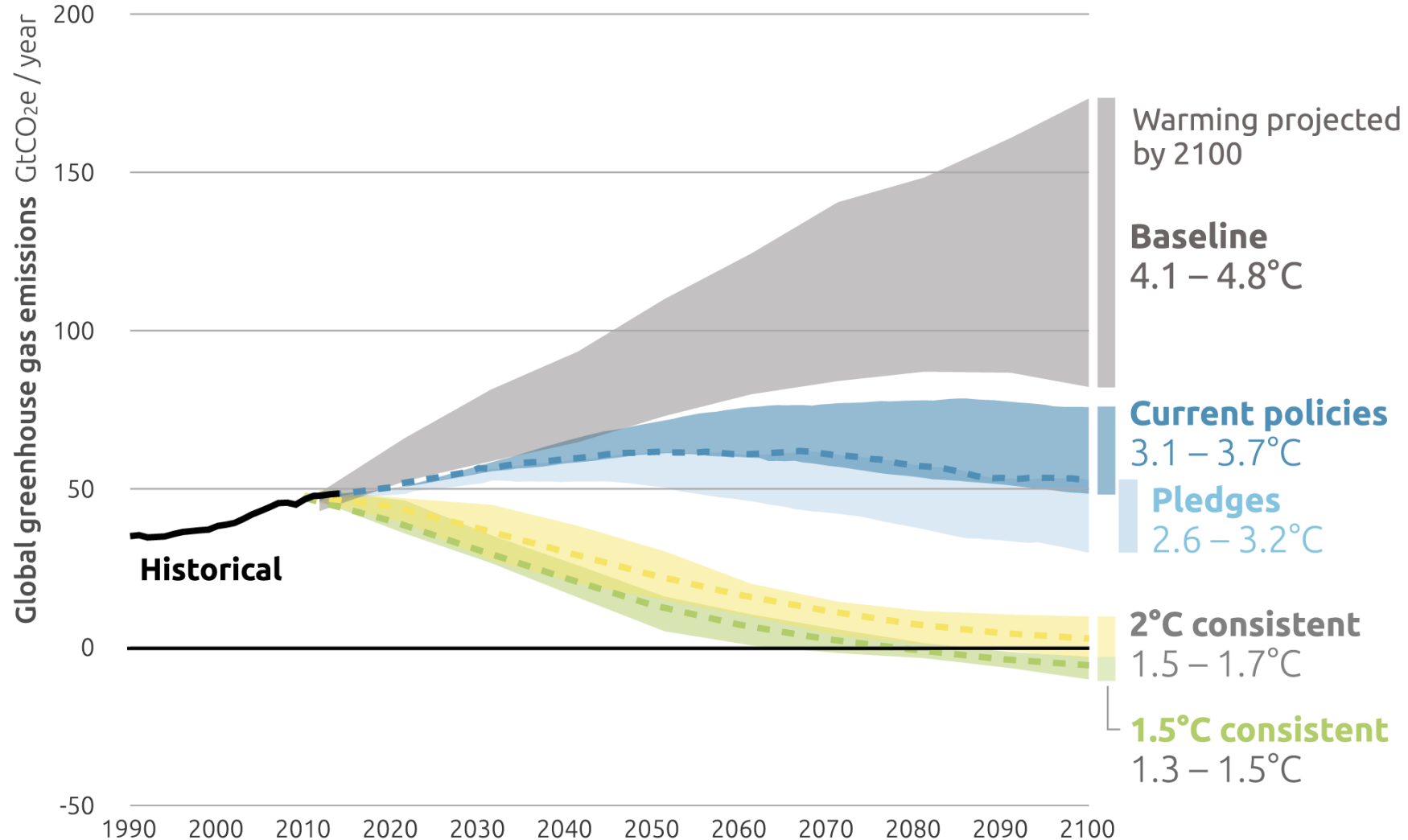
Climate Change and Variability



Climate Change and Variability

2100 WARMING PROJECTIONS

Emissions and expected warming based on pledges and current policies



Climate Action Tracker

Centre for
Risk Studies



UNIVERSITY OF
CAMBRIDGE
Judge Business School